



pearson
ferrier®



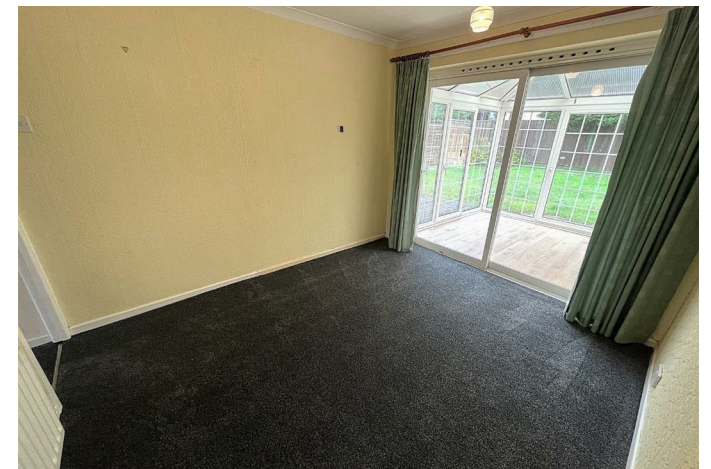
4 GREEN PARK CLOSE
Bury, BL8 4QB
£1,150 PCM

4 GREEN PARK CLOSE

Property at a glance

- Detached bungalow
- Fantastic location
- Front and rear garden
- Driveway
- Two bedrooms
- Two reception rooms

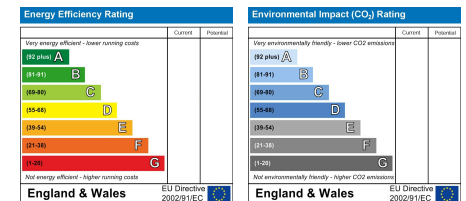
Green Park Close, Greenmount is a two bedroom detached bungalow located on the very desirable estate just a short walk from local amenities and a short drive to both Ramsbottom and Tottington. The property is unfurnished and is warmed by gas fired central heating and is PVC double glazed throughout. The accommodation briefly comprises; entrance hallway with alarm, very spacious living room, two bedrooms, dining room, kitchen, conservatory and family bathroom. Outside there is a paved driveway for multiple cars, a garden at the front of the property and a large rear garden with decking. Please note, a holding deposit equivalent to 1 weeks rent is required on application. Council Tax Band C. EPC: tbc







Whilst every attempt has been made to ensure the accuracy of the floorplan contained here, measurements of doors, windows, rooms and any other items are approximate and no responsibility is taken for any error, omission or misstatement. This plan is for illustrative purposes only and should be used as such by any prospective purchaser. The services, systems and appliances shown have not been tested and no guarantee as to their operability or efficiency can be given.
 Made with: Netopex ©2025



Ramsbottom Office
 11 Bolton Street, Ramsbottom, BL0 9HU
 Telephone: 01706 822630
 Fax: #
 Email: ramsbottom@pearsonferrier.co.uk

www.pearsonferrier.co.uk



All statements contained in these particulars are for indicative purposes only and are made without responsibility on the part of Pearson Ferrier and the vendors of this property and are not to be relied on as statements or representations of fact. Potential purchasers should satisfy themselves by inspection or otherwise as to the accuracy of such details contained in these particulars.